

AP Calc Warm Up – 9/13/10

Name: _____

Period: _____

1) Determine if the following functions have any discontinuities.

a. $f(x) = \frac{x^2 - 4x - 12}{x - 6}$

b. $f(x) = \frac{1}{x^2 + 5x + 6}$

AP Calc

Finding Limits with Graphs

Name: _____ Date: _____ Period: _____

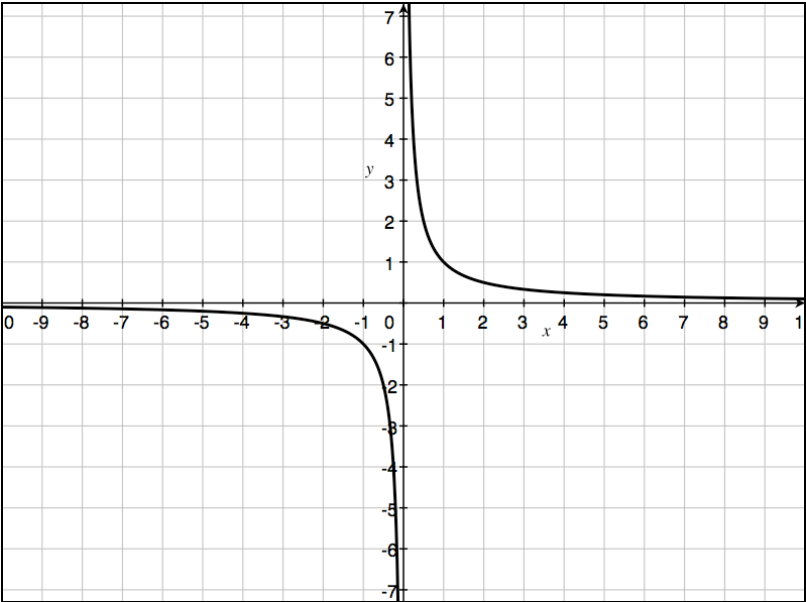
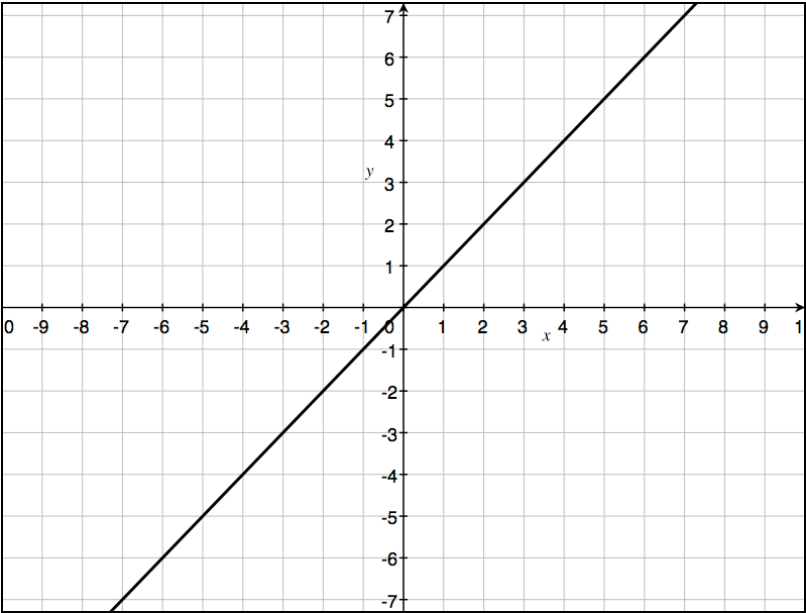
Students will be able to find the limit of a function using its graph.
--

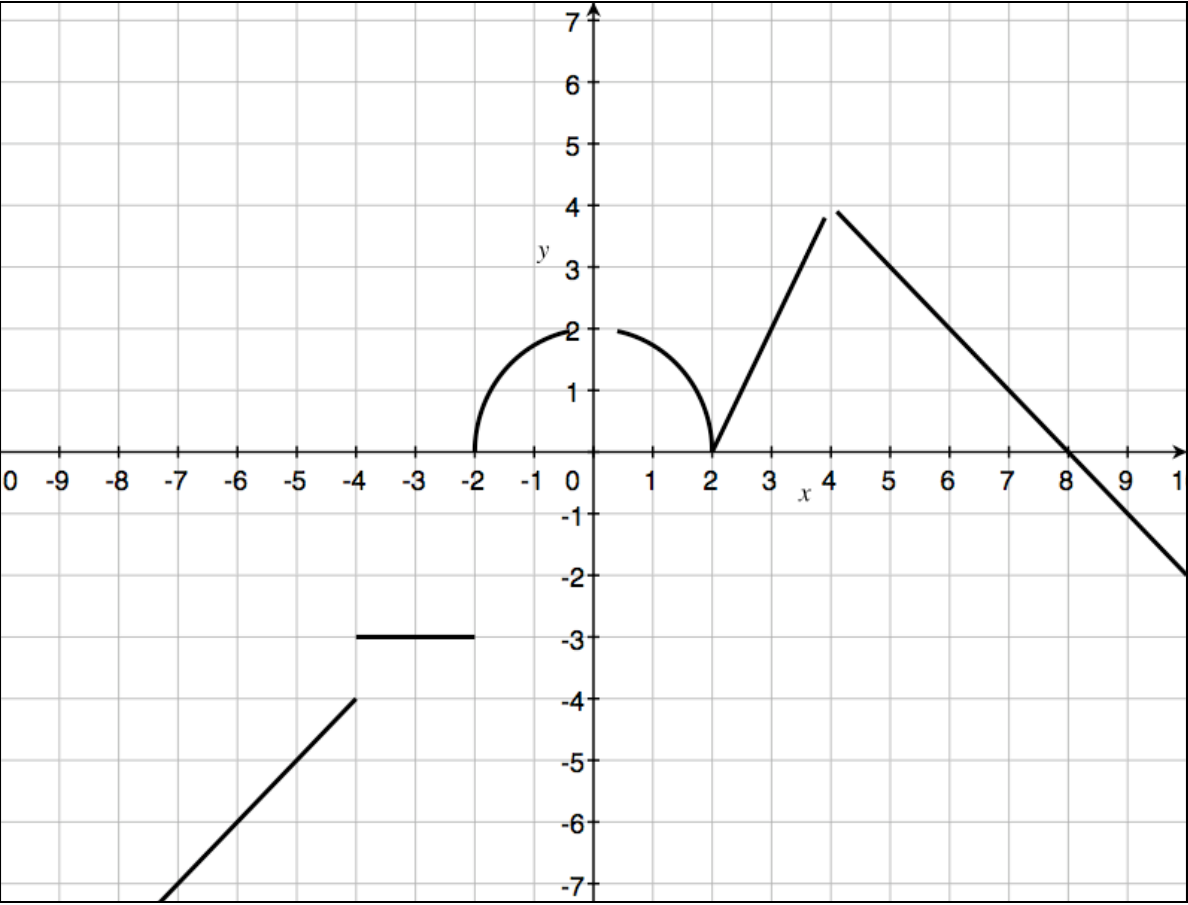
Limit notation:

What does it mean?

How can we find a limit?

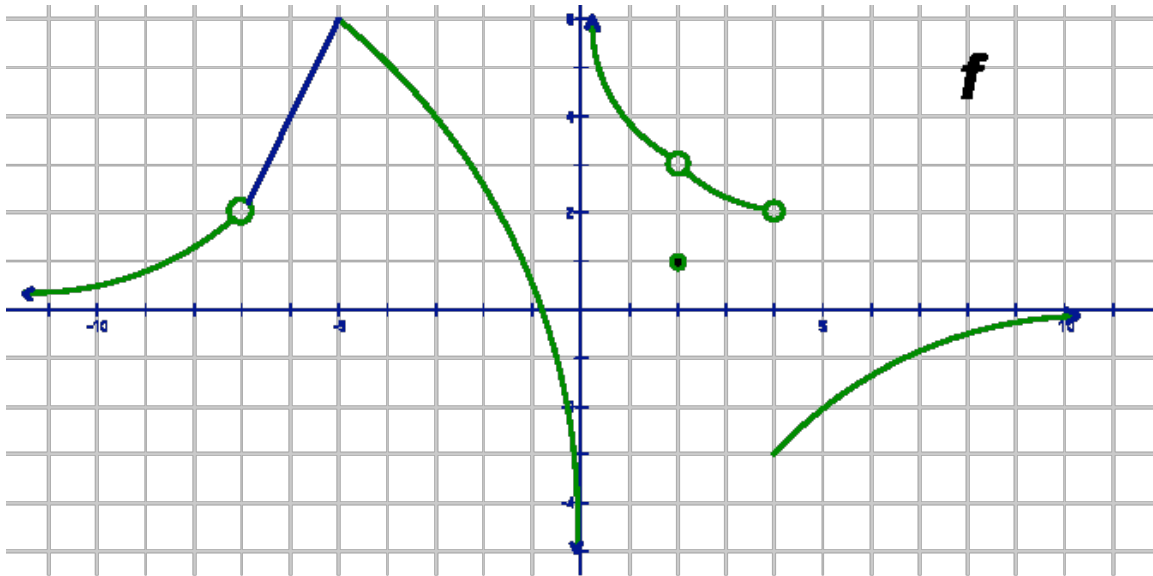
Examples





Practice

I. The graph of a function f is shown below.



Answer the following questions about function f .

1. $f(-5) =$

2. $f(2) =$

3. $f(4) =$

4. $\lim_{x \rightarrow -7} f(x) =$

5. $\lim_{x \rightarrow -5} f(x) =$

6. $\lim_{x \rightarrow 2} f(x) =$

7. $\lim_{x \rightarrow 4} f(x) =$

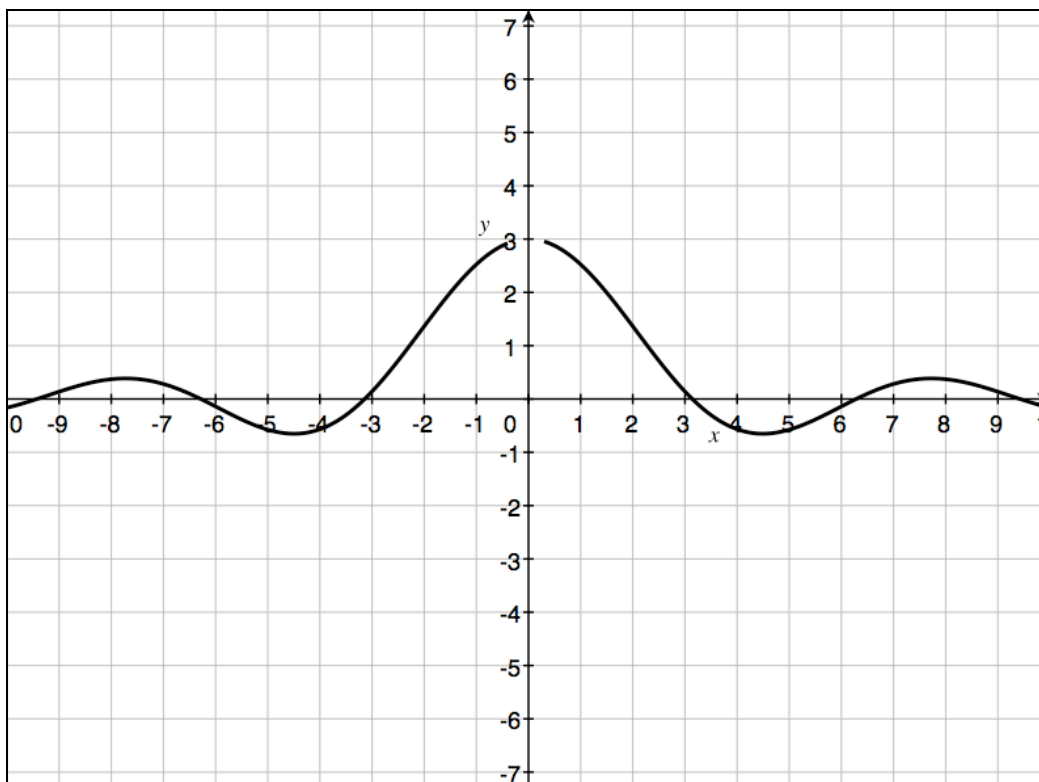
8. $\lim_{x \rightarrow 0} f(x) =$

AP Calc – Exit Slip – 9/13/10

Name: _____

Period: _____

1) Use the graph to answer the following questions.



a. $f(0) =$

b. $\lim_{x \rightarrow 0} f(x) =$