

PERIOD:

STUDENT #:

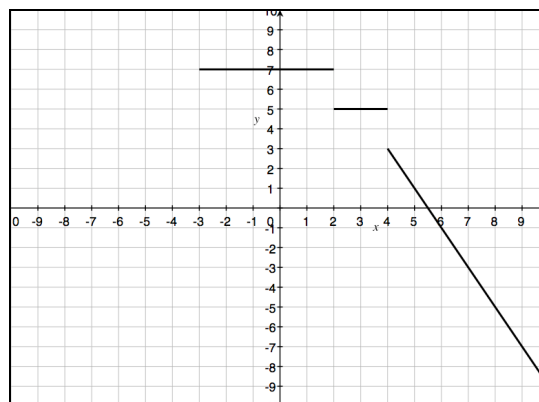
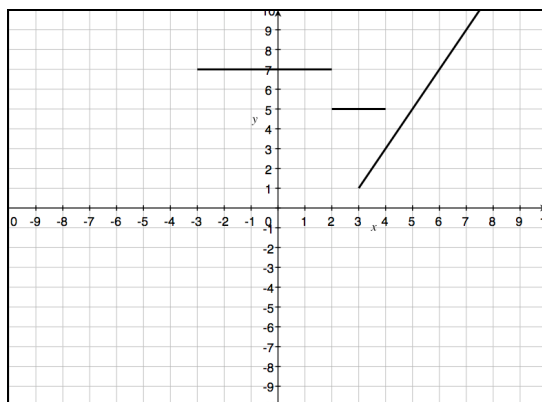
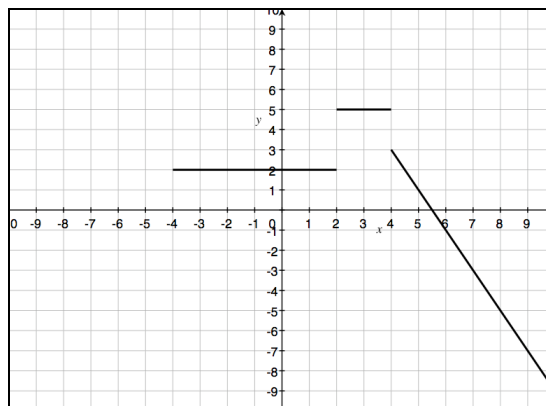
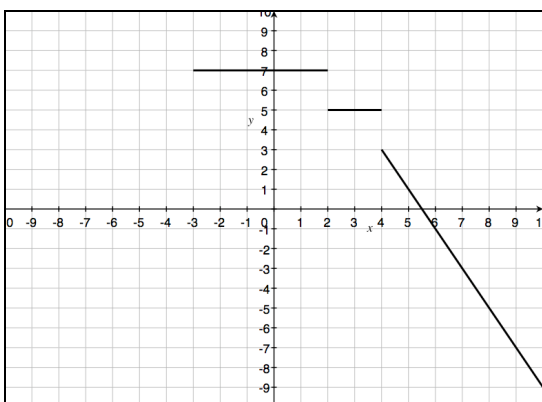
# Precalc Warm Up – 9/3/10

Name: \_\_\_\_\_

Block: \_\_\_\_\_

1) Match the following piecewise function to its graph.

$$f(x) = \begin{cases} 7, & -3 \leq x < 2 \\ 5, & 2 \leq x < 4 \\ -2x + 11, & x \geq 4 \end{cases}$$



PERIOD:

STUDENT #:

## Graphing Piecewise Functions SKILL BUILDER PRACTICE

Name: \_\_\_\_\_ Date: \_\_\_\_\_ Period: \_\_\_\_\_

Concept – Students will be able to write the equation of a piecewise function given a graph

Graph the following piecewise functions on a piece of graph paper:

$$1) f(x) = \begin{cases} 4, & x < 6 \\ -2, & x \geq 6 \end{cases}$$

$$2) f(x) = \begin{cases} 3x - 5, & x > 2 \\ -4, & x \leq 2 \end{cases}$$

$$3) f(x) = \begin{cases} 2x + 3, & x < -2 \\ 1, & x \geq -2 \end{cases}$$

$$4) f(x) = \begin{cases} x + 4, & x \leq 1 \\ 5, & 1 < x \leq 4 \\ -2x + 13, & x > 4 \end{cases}$$