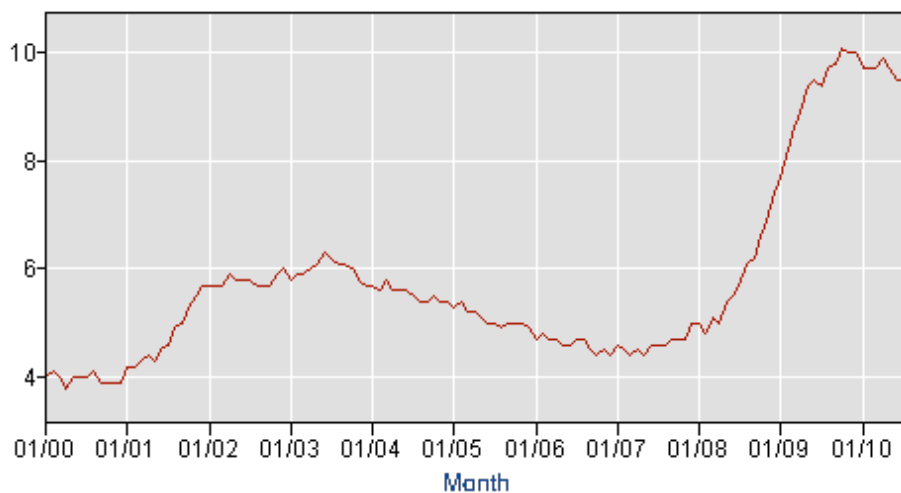


# Precalc Warm Up – 9/15/10

Name: \_\_\_\_\_

Block: \_\_\_\_\_

- 1) Consider the following graph of the unemployment rate over time and answer the following questions.
- Over the interval from 1/04 to 1/07 did the unemployment rate increase or decrease?
  - Over the interval 1/07 to 1/10 did the unemployment rate increase or decrease?
  - Estimate the average rate of change of the employment rate from 1/07 to 1/10.



# Comparing Graphs

## Concept Builder

Name: \_\_\_\_\_ Date: \_\_\_\_\_ Period: \_\_\_\_\_

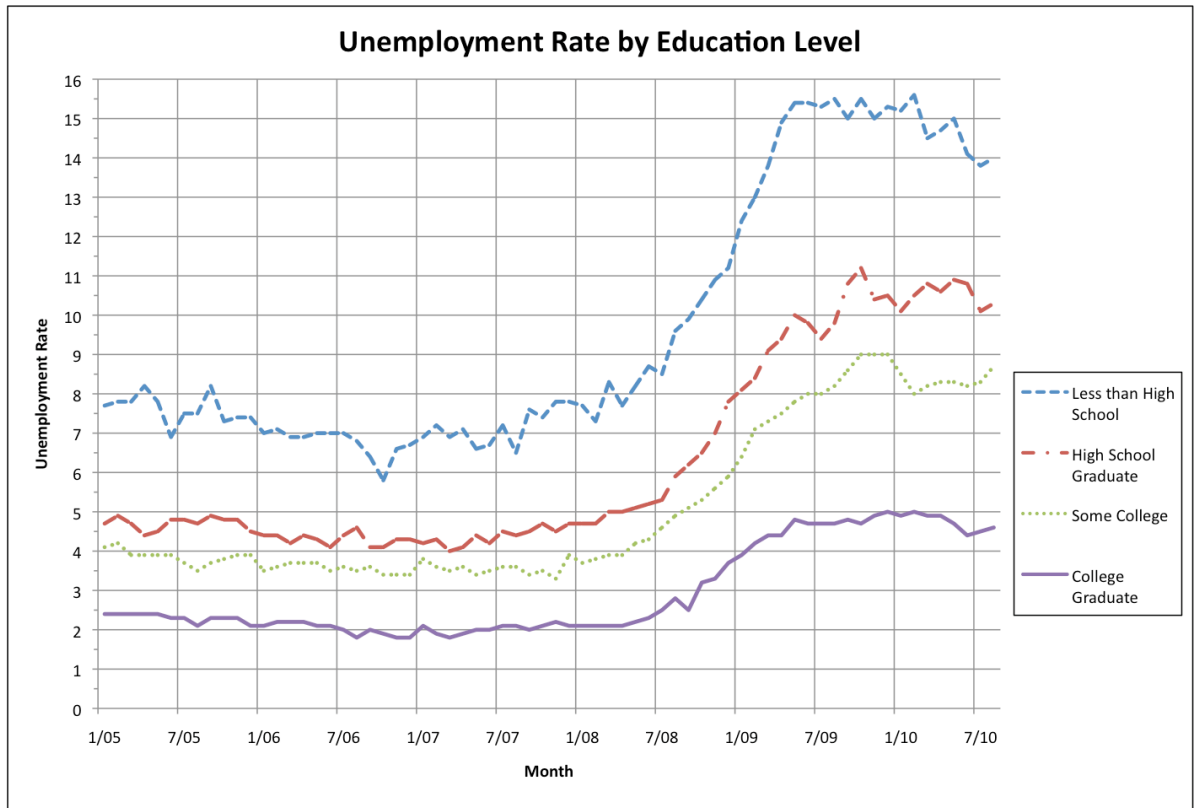
**Concept – Students will be able to compare a graph with multiple sets of data on it.**

Consider the graph that Mr. Monte-Sano has on the board to answer the following questions:

- 1) What was the unemployment rate for people with less than a high school education in 1/07?
- 2) What was the unemployment rate for people with less than a high school education in 1/10?
- 3) What was the average rate of change of the unemployment rate for people with less than a high school degree for the period from 1/07 to 1/10?

Consider the next graph that Mr. Monte-Sano has on the board to answer the following questions:

- 1) What was the unemployment rate for people with a college education in 1/07?
- 2) What was the unemployment rate for people with a college education in 1/10?
- 3) What was the average rate of change of the unemployment rate for people with a college education for the period from 1/07 to 1/10?



**Questions about a single point in time**

- 1) First we'll ask some questions about unemployment at January 2010.
  - a. People with which level of education had the highest unemployment rate at 1/10? What was their unemployment rate?
  - b. How high was the unemployment rate for college graduates at January 2010?

**Questions about changes over time**

2) Now, we'll ask some questions about the change in unemployment rates over time.

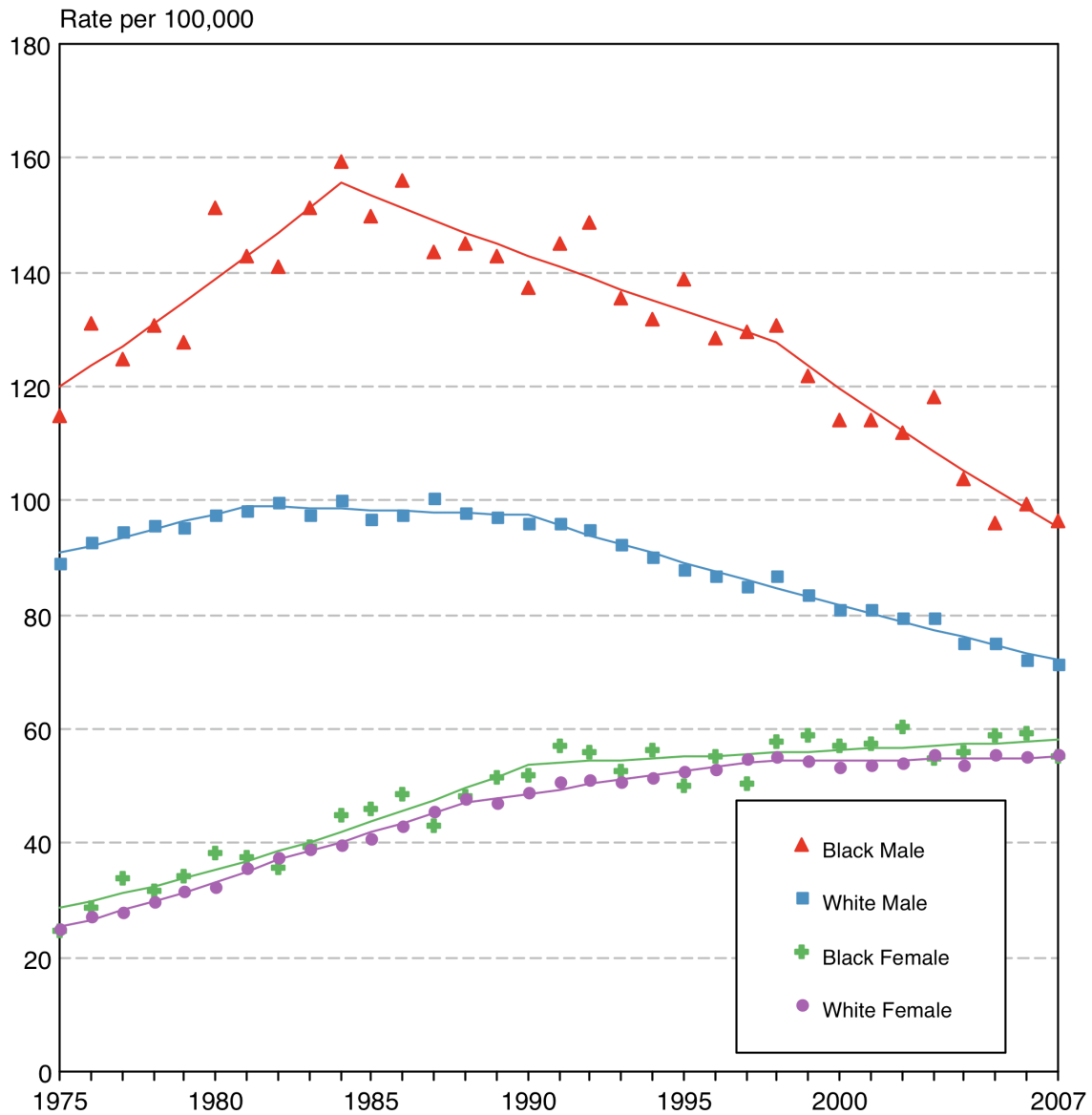
a. From 1/07 to 1/10 are unemployment rates generally increasing or decreasing?

b. What was the average rate of change of unemployment for each education level for the period from 1/07 to 1/10? Fill in the table with your answers.

Education level	Average rate of change of unemployment rate from 1/07 to 1/10
Less than High School	
High School Graduate	
Some College	
College Graduate	

c. Which group increased at the greatest rate?

# LUNG CANCER RATES FOR DIFFERENT RACES/SEXES



**Questions about a single point in time**

- 1) In 2007, which group had the greatest incidence of lung cancer? Which group had the lowest?
  
- 2) What was the rate of lung cancer for White Males in 2002?

**Questions about changes over time**

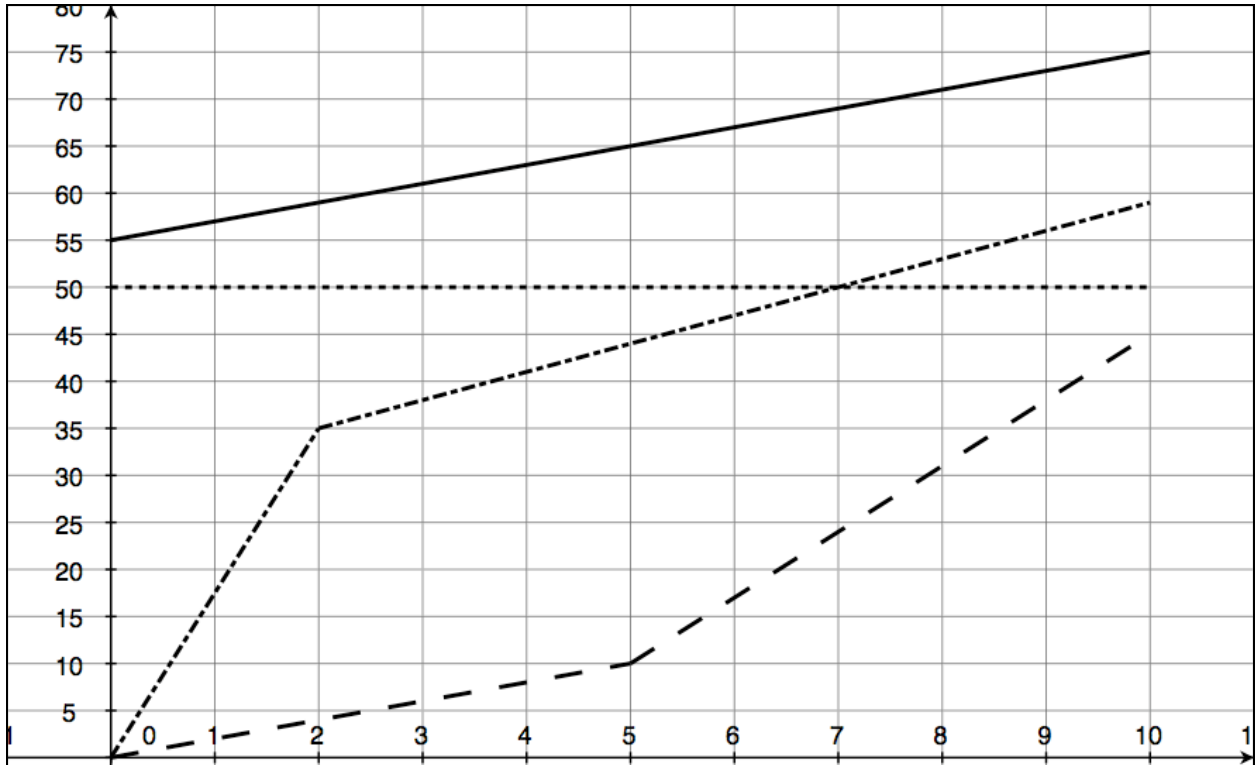
- 1) Is the lung cancer rate for females increasing or decreasing?
  
- 2) Over what years did the lung cancer rate for Black Males increase?
  
- 3) Over what years did the lung cancer rate for Black Males decrease?
  
- 4) Did the lung cancer rate decrease at a greater rate for White Males or Black Males from 1985 to 2007?

# Precalc – Exit Slip – 9/15/10

Name: \_\_\_\_\_

Period: \_\_\_\_\_

- 1) The following graph represents the total number of candy bars sold by four different seniors over 11 days (Day 0 to Day 10). For example, at the end of day 5 Senior 1 sold a total of 65 candy bars. Use the graph to answer the following question.



- 1) How many candy bars had Senior 1 sold by the end of day 10?
- 2) Which senior sold candy bars at the fastest rate from day 5 to day 10? (you must show work)
- a) Senior 1
  - b) Senior 2
  - c) Senior 3
  - d) Senior 4